

Summitliftco.net



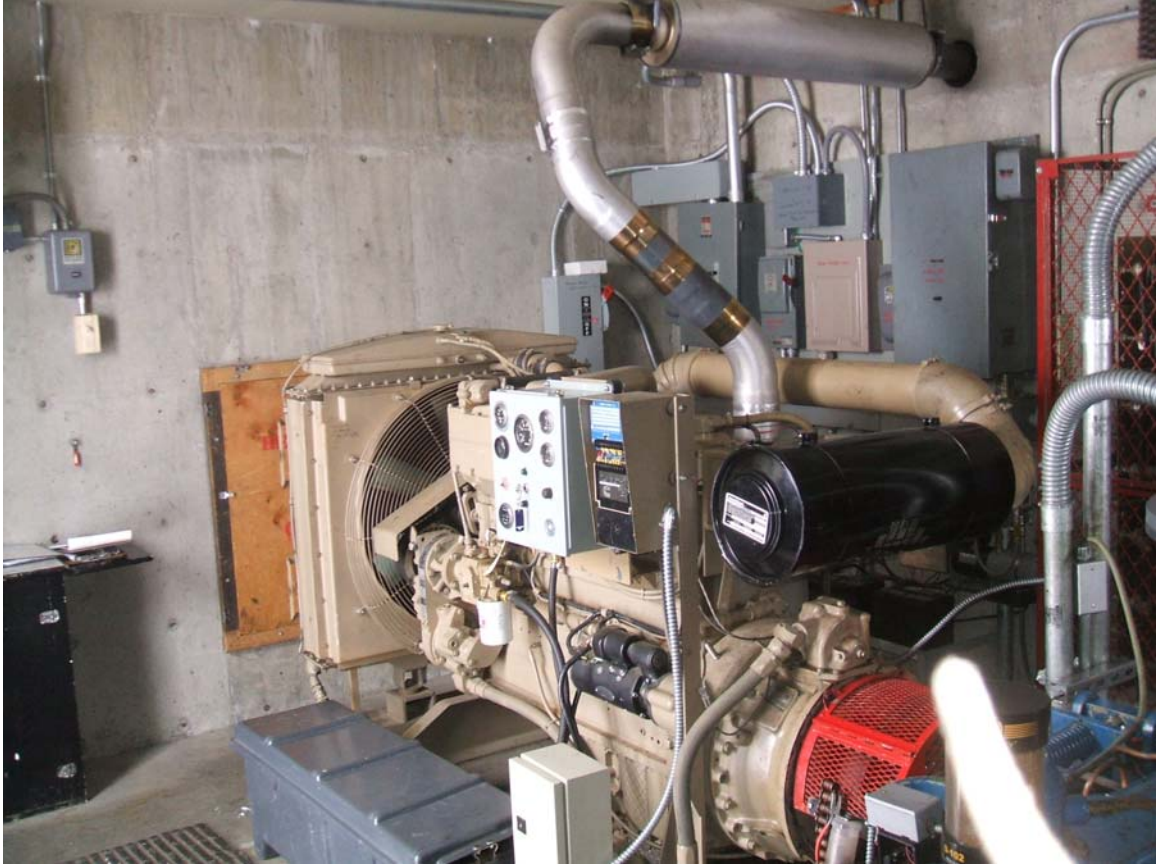
FOR SALE

Double Chairlift

This is an operating Riblet double chairlift that will be removed in the spring of 2009. It is in excellent operating condition and has features such as upgraded controls, hydraulic tension and full auxiliary backup. This lift is being replaced by a higher capacity model and has many years of life left in a new placement or for parts.







Price ex parking lot Bridger Bowl Montana \$50,000.00 US

IDENTIFICATION DATE FOR THIS LIFT

at Bridger

NOTES

Riblet Tramway Company

Manufacturer Riblet Tramway Company

1st day of operation 1964 Modified 1970; shortened 1995

acted by Bridger CTEC Hydraulic Tension Turn 95'

horizontal length 6295 3775 Ft.

rope length 4004 Ft.

rise 1690 1334 Ft.

hill passenger capacity 645 875 /Hr.

downhill loading limits every 10th chair

maximum speed 500 Ft. per Min.

carrier spacing 93 68.57 Ft.

carrier interval 111 8 sec. sec.

number of carriers 135 114 116 FAAT back

capacity of each carrier centerpost double

number of towers 27 tubular fixed crossarms VT 17

location of drive top

average max. snow depth lower terminal 4'

along line 8'

upper terminal

haul rope specifications 1-1/8" 6X25 I.P.S. F.C. 1/4

counterweight rope specifications 7A

rope splice length 136 156 Ft.

rope gauge 10'

carrier grip model # Riblet short shank insert #6 Long Shank #7 4#8

break over sheave # 1-1/8" B0 1/4 B0

break over sheave hub # SGC 2328A RTC 2439

compression sheave # 1-1/8" D 1/4 Dep.

compression sheave hub # RRG-2327A RTC 2441

Total Tension 19500 #

LINE Machinery

TYPE	DESCRIPTION	QUANTITY
A	15 - 4 sheave Brake over	0000
B	4 - 6 sheave	0000
D	2 - 4 sheave 2 safety	0000
F	9 - 2 sheave	00
G	2 - 2 sheave 1 safety	00
J	2 - 3 sheave	00
K	2 - 3 sheave	00